

THIS DRAWING IS UNPUBLISHED.

RELEASED FOR PUBLICATION

ALL RIGHTS RESERVED.

© COPYRIGHT - By -

LOC AF DIST 50

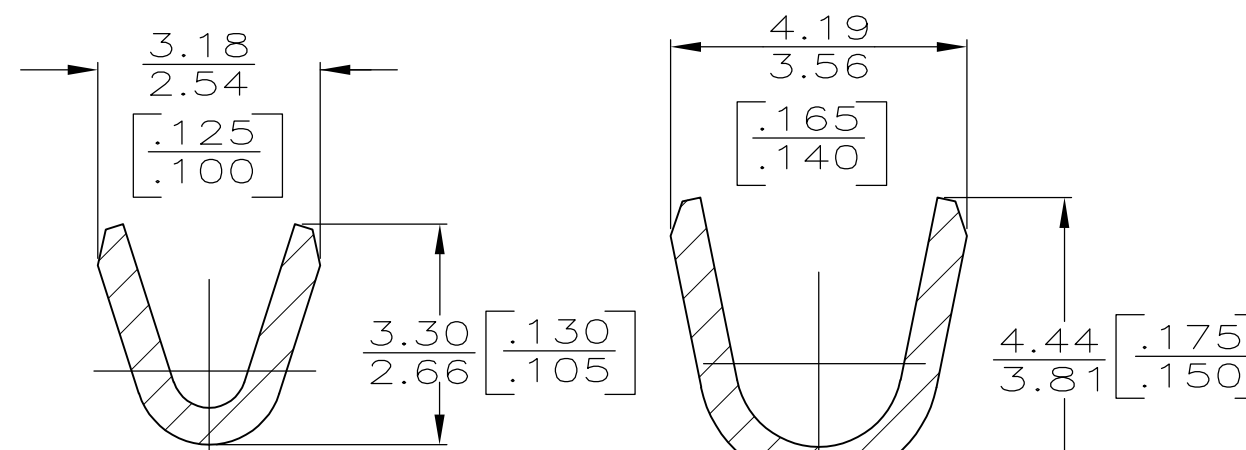
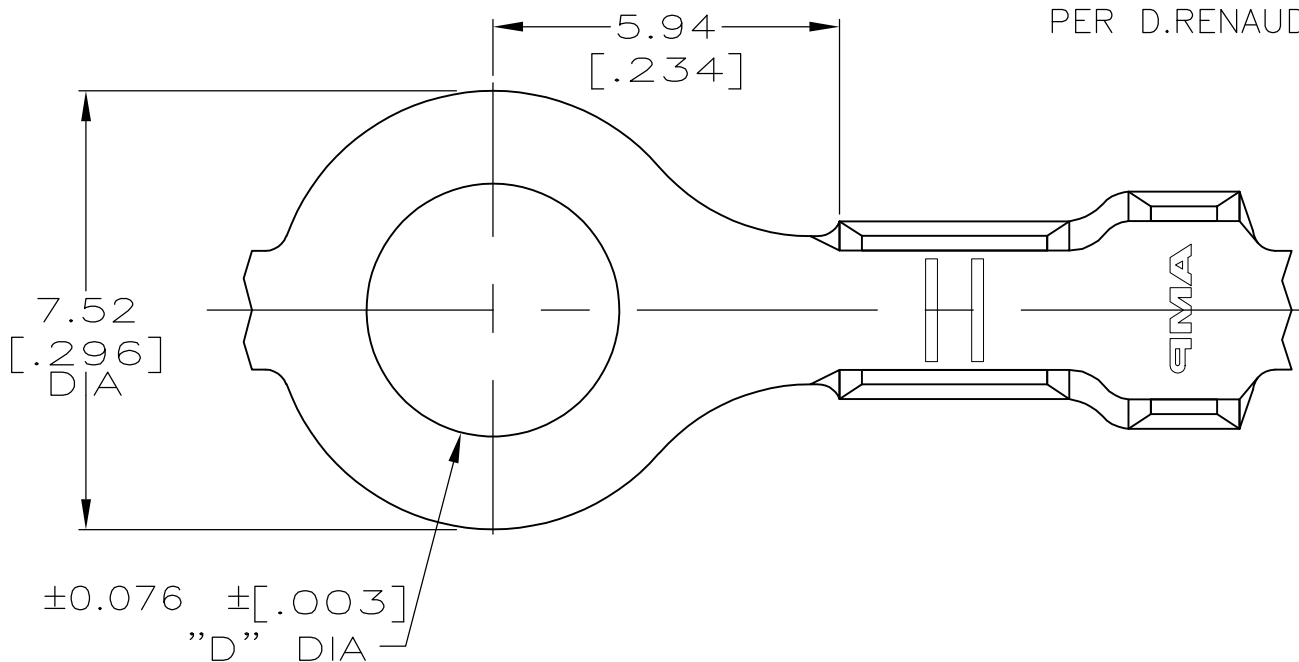
REVISIONS

P	LTR	DESCRIPTION	DATE	DWN	APVD
	L2	REVISED PER ECO-11-004587	11MAR11	RK	HMR

6 REDUCED PACKAGE QUANTITY.

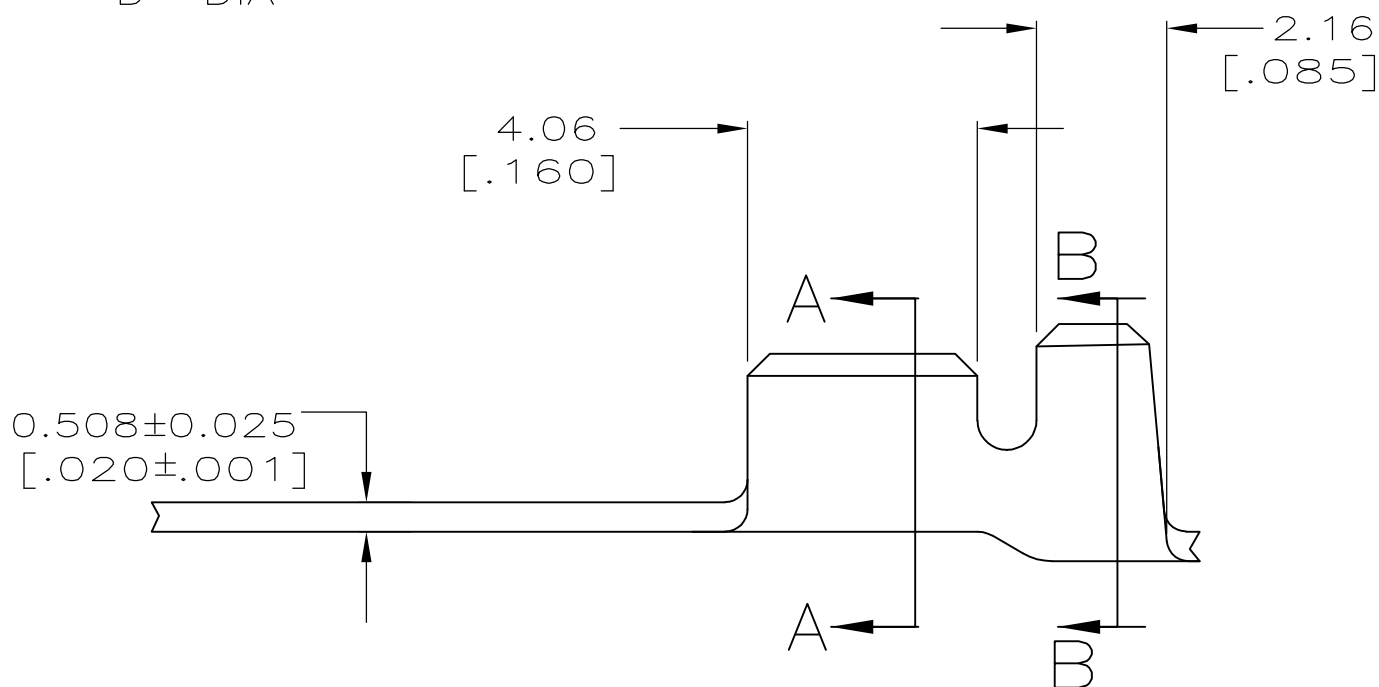
7 OBSOLETE PARTS: OBSOLETE CIS STREAMLINING PER D.RENAUD/D.SINISI

- 1 CONTINUOUS STRIP ON REEL.
- 2 WIRE SIZE IS [#22-#18] AWG.
- 3 INSULATION RANGE IS 2.03-2.79 [.080-.110] DIA.
- 4 FOR FOREIGN PRODUCTION ONLY REELED WITH PAPER INTERLEAVE
- 5 PRELIMINARY - NOT FOR PRODUCTION



SECTION A-A SCALE 10:1

SECTION B-B SCALE 10:1



FINISH	STUD SIZE	D	DIM	PART NO
TIN PLATING	M 3.5 - [#6]	3.68	[.145]	42037-9
TIN PLATING	[#10]	5.00	[.197]	42037-8
OBSOLETE	TIN PLATING M 4 - [#8]	4.34	[.171]	42037-7
OBSOLETE	TIN PLATING [#10]	5.00	[.197]	42037-6
TIN PLATING	[#10]	5.00	[.197]	42037-2
TIN PLATING	M 4 - [#8]	4.34	[.171]	42037-1
TIN PLATING	M 3.5 - [#6]	3.68	[.145]	42037

THIS DRAWING IS A CONTROLLED DOCUMENT.		DWN JR RUTH 01AUG00	<b>STE</b> TE Connectivity		
DIMENSIONS: mm [INCHES]		CHK MS FEHER 01AUG00			
TOLERANCES UNLESS OTHERWISE SPECIFIED:		APVD D DECKER 01AUG00	NAME		
0 PLC ± -		PRODUCT SPEC	RING		
1 PLC ± -		APPLICATION SPEC	RESTRICTED TO		
2 PLC ± 0.25 [.010]		WEIGHT -	SIZE A3	CAGE CODE 00779	DRAWING NO C-42037
3 PLC ± -		MATERIAL 082 BRASS	SCALE 8:1		SHEET 1 OF 1
4 PLC ± -			CUSTOMER DRAWING		REV L2
ANGLES ± -		FINISH SEE TABLE			